

ALUSIGNPANEL[®]

ALUMINUM COMPOSITE PANELS

WENZHOU JIXIANG COMPOSITE PANEL CO.,LTD.

ACP MANUFACTURER SINCE 2000

温州市吉祥板业
WENZHOU JIXIANG COMPO



C CONTENTS

01



BRIEF INTRODUCTION

02



PRODUCT CATEGORIES

03



MAIN PROJECTS

ABOUT US

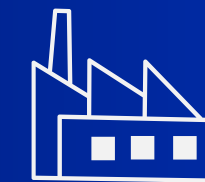


Founded in 2000

Dedicated to Production, R&D, Trading & Servicing of Aluminum Composite Panels

Factory

Located in Yueqing Economic Development Zone, Wenzhou city, Zhejiang province, China



Company with over
154 employees



| Total 12 high-speed production lines

6 ACP Production Lines

With daily output over
32,000m² of 3mm
Aluminum Composite
Panels.



1 ACCP Production Line

With Daily output over
5,000m² of 4mm A2 FR
Aluminum Corrugated
Composite Panels





2 Color Coating Lines

With monthly output 1,200
Tons Color coated
Aluminum Coil.

3 Polyethylene Plastic Production Lines

To supply stable & quality
LDPE plastic core.



MAIN BRAND

National High-tech Enterprise

To make your trustful brand of Aluminum
Composite Panel - **ALUSIGNPANEL**



YBOND®

ALUSIGNPANEL®



CERTIFICATE



ISO9001:2015, ISO14001:2015 and OHSAS18001:2007
SGS, CE, UL, FR and CTC certificates for product series

I MAIN MARKET

- Shanghai Branch Company:
**SHANGHAI JIXIANG COMPOSITE
PANEL CO., LTD.**
- Complete sales & service network
in 23 provinces of China.
- **Widely exported to:** USA, Canada, Mexico,
Brazil, Chile, Australia, Indonesia, Qatar,
UAE, Philippines, Singapore, UK, Germany,
France, Poland, Nepal, Nigeria, Ghana,
South Africa and more.



| Product Categories

01

**Aluminum Composite Panel
(ACP)**



02

**A2 FR Aluminum Corrugated
Composite Panel (ACCP)**



03

Color Coated Aluminum Coil



| 01 ALUMINUM COMPOSITE PANEL (ACP)

ALUSIGNPANEL Protective Film

Top Aluminum Skin with PE/PVDF coating

Polymeric membrane

Standard LDPE Core & Optional FR Core

Polymeric membrane

Bottom Aluminum Skin with service coating



Aluminum Composite Panel (ACP)

Aluminum Composite Material (ACM)

Alucobond



MAIN SPECIFICATION

Width	1220mm / 1250mm / 1500mm / 2000mm
Length	Upon request, recommend 2440mm, 3050mm, 5000mm
Panel Thickness	2.0mm – 6.0mm (recommend 3mm, 4mm)
Aluminum Skin Thickness	0.10mm – 0.50mm (popular 0.21mm, 0.30mm, 0.50mm)
Coating	PE / HDPE / PVDF / FEVE
Core Materials	Polyethylene Plastic (LDPE) or FR (A2 & B1 Fire Resistant)
Colors	Refer to factory's color chart or customize
Protective Film	Alusignpanel , Ybond , Blank film or OEM designs
Standard Size	1220mm × 2440mm (4' × 8') 1500mm × 3050mm (5' × 10')

MAIN APPLICATION

- Exterior wall cladding of commercial buildings, hotel, apartment, stadium, hospital, restaurant, shopping mall and so on
- Decorative material for the bank, store, gas station, gallery
- Billboard, signage board, display, partition board
- Ceiling, kitchen cabinet, balcony, partition, furniture board
- Tunnel, subway, vehicle bodies, and industrial usage



MAIN SERIES



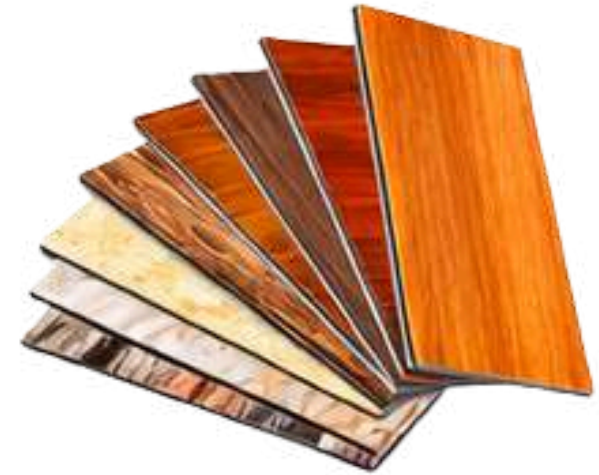
PE ACP



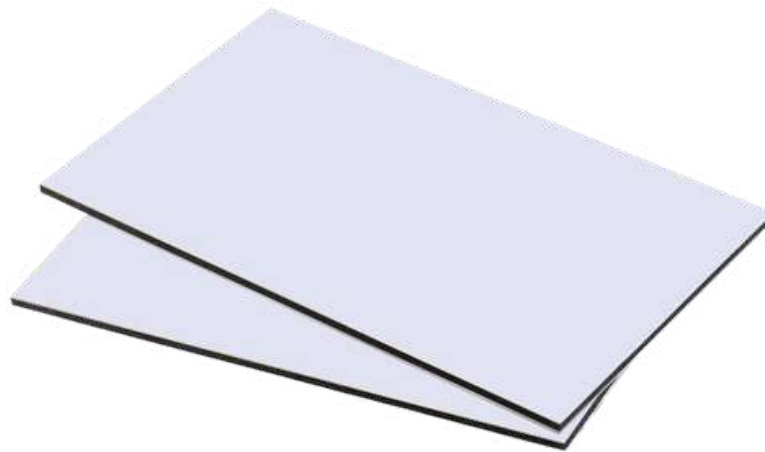
PVDF ACP



FEVE ACP



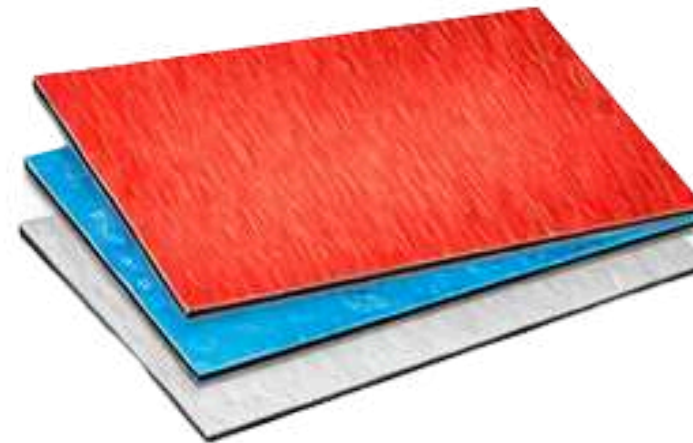
WOOD & STONE ACP



FIREPROOF (A2 & B1 FR) ACP



MIRROR ACP



BRUSHED ACP



OUTDOOR ANTI-SCRATCH ACP



ACP FR



The ACP FR (Fire-Resistant) from Alusignpanel is composed of a fire-retardant plastic core OR non-combustible mineral core with two aluminum coil cover layers. This innovative material is eco-friendly and designed to offer enhanced safety in case of fire. Thanks to the added flame retardant elements, the ACP FR achieves B1 OR A2 fire resistance classification according to GB/T8627 & EN13501-1 standard. It is ideal for applications in buildings that require high fire safety standards.

Materials:

Aluminum Base Material: High-strength aluminum alloy sheet.

Core: Non-toxic Fire-resistant (FR) core or Non-combustible mineral core

Surface: PVDF coating, FEVE coating, PE coating

Technical Information

Width	1220mm, 1250mm, 1500mm
Length	2440mm, 2700mm, 3000mm, preferably ≤5000mm
Panel Thickness	4mm, 5mm, 6mm
aluminum Skin Thickness	0.21mm~0.50mm; 0.21mm, 0.30mm, 0.40mm, 0.50mm
Standard Size	1220mm x 2440mm (4' x 8'), 1500mm x 3050mm (5' x 10')
Colours	45 factory standard colours for reference
Others	Custom sizes and personalized colours also accepted

Applications:

- High-Rise Building Facades Airports
- Hospitals
- Public Buildings
- Commercial and Residential Buildings

Advantages:

- High Fire Resistance (Class B1 or A2)
- Non-toxic & Safe Eco-friendly Material Hard-burning or Non Combustible
- Difficulty in fire propagation
- Enhanced Safety
- Compliance with International Standards



	4×0.30mm (ECO)	4×0.40mm	4×0.50mm (Standard)
Width (mm)	1220/1250/1500	1220/1250/1500	1220/1250/1500
Length (mm)	2000~5000	2000~5000	2000~5000
Weight (Kgs)	6.7	6.9	7.2
Alloy/Temper of the cover sheets	AA3003/H24	AA3003/H24	AA3003/H24
Surface Coating	PVDF/FEVE/PE	PVDF/FEVE/PE	PVDF/FEVE/PE
Core Materials	Flame-retardant plastic core	Flame-retardant plastic core	Flame-retardant plastic core
Colour	Solid, Metallic, Wood, Stone, RAL & Pantone	Solid, Metallic, Wood, Stone, RAL & Pantone	Solid, Metallic, Wood, Stone, RAL & Pantone



	4×0.30mm (ECO)	4×0.40mm	4×0.50mm (Standard)
Width (mm)	1220/1250/1500	1220/1250/1500	1220/1250/1500
Length (mm)	2000~5000	2000~5000	2000~5000
Weight (Kgs)	8.0	8.2	8.4
Alloy/Temper of the cover sheets	AA3003/H24	AA3003/H24	AA3003/H24
Surface Coating	PVDF/FEVE	PVDF/FEVE	PVDF/FEVE
Core Materials	Non-combustible mineral core	Non-combustible mineral core	Non-combustible mineral core
Colour	Solid, Metallic, Wood, Stone, RAL & Pantone	Solid, Metallic, Wood, Stone, RAL & Pantone	Solid, Metallic, Wood, Stone, RAL & Pantone

FIRE-RESISTANCE PERFORMANCE STANDARD					
No.	CHINA GB/T8624	GERMANY DIN 4102	U.S.A. ASTM E84	FRANCE NFF16-101	EU EN13501
1	A1, A2	A1, A2	NC	MO	A1, A2
2	B1	B1	A	M1, M2	B1
3	B2	B2	B, C	M3	C

LEVEL AND COMBUSTION PROPERTY			
Degree	Item	Degree	Item
A2	None-combustion	B1	Hard-combustion
B2	Combustion	B3	Combustible
Degree	Material	The Combustion Performance Indicators	

None-combustion

Class A2 Material

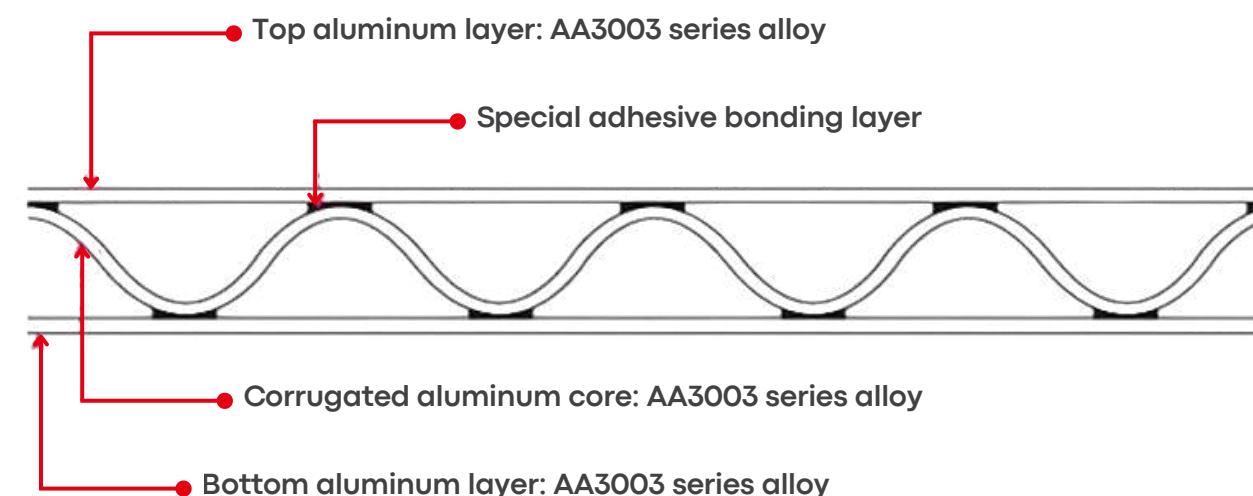
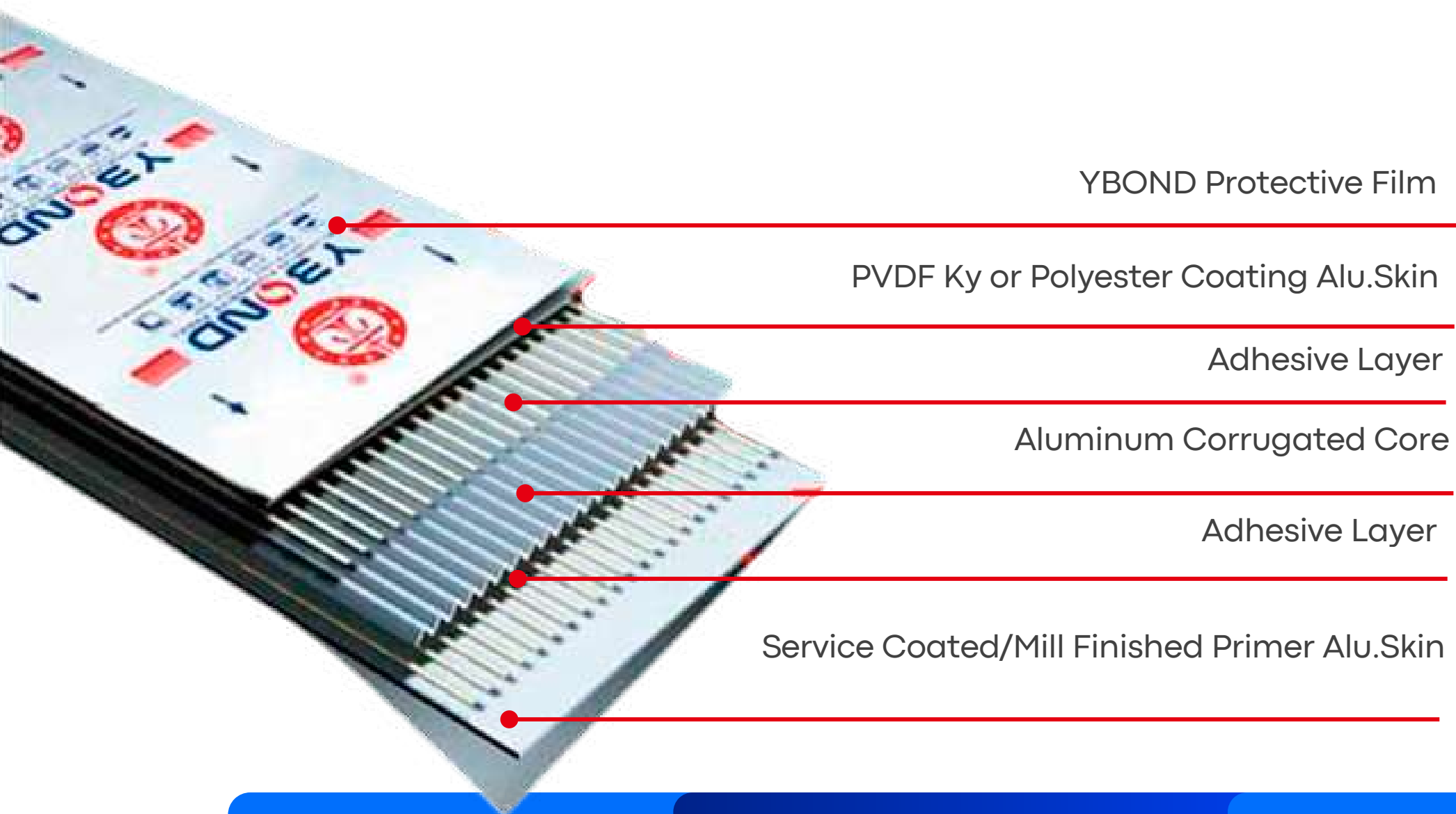
According to GB/T8625 test, the average length of the remaining ≤ 35 cm (including any residual specimen length ≥ 20 cm) for each test and average flue gas temperature peaks $\leq 150^{\circ}\text{C}$, no specimen back burner the scene;
 According to GB/T8627 test, their smoke density levels (SDR) ≤ 15 ;
 According to GB/T14002 and GB/T14403 test, its calorific values $\leq 4.2\text{MJ/kg}$, and the specimen thermal emission per unit area $\leq 16.8\text{MJ/m}^2$;
 Toxicity materials combustion flu gas of the entire non-lethal concentration of ≥ 25 mg/L.

Hard-combustion

Class B1 Material

According to GB/T8626 test, its combustion properties should be met GB/T8626, and does not allow any dropping of combustion burn the filter paper;
 According to GB/T8625 test, the average of each specimen remaining length ≥ 15 cm (including any residual specimen length ≥ 0 cm), and average peak temperature of gas $\leq 200^{\circ}\text{C}$ in each test.
 According to GB/T8627 test, their smoke density levels (SDR) ≤ 75 .

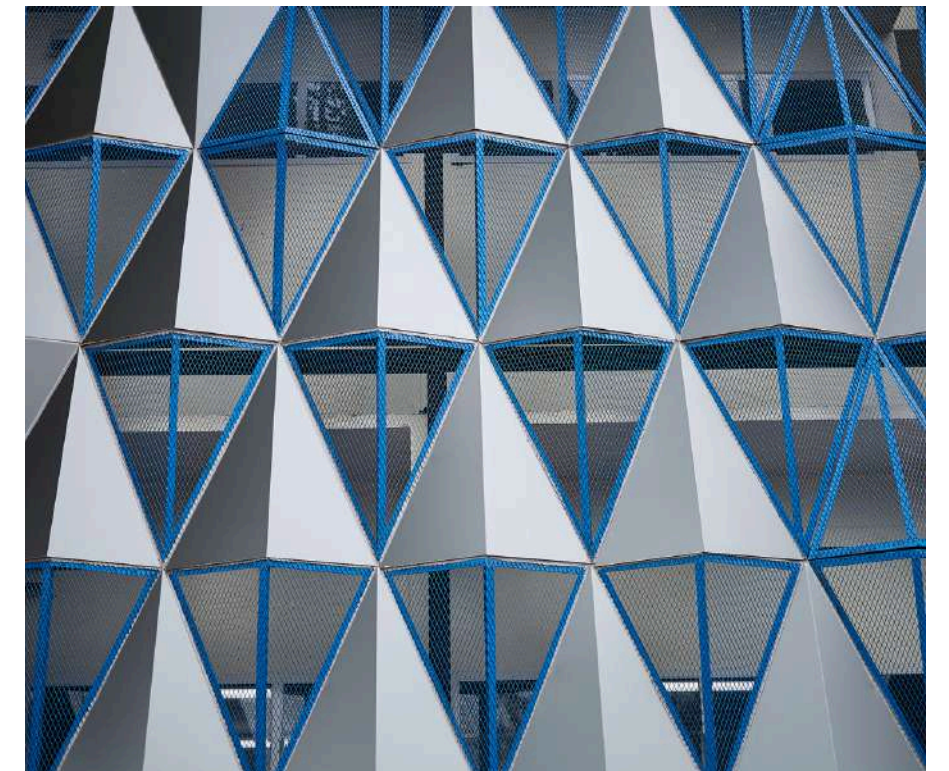
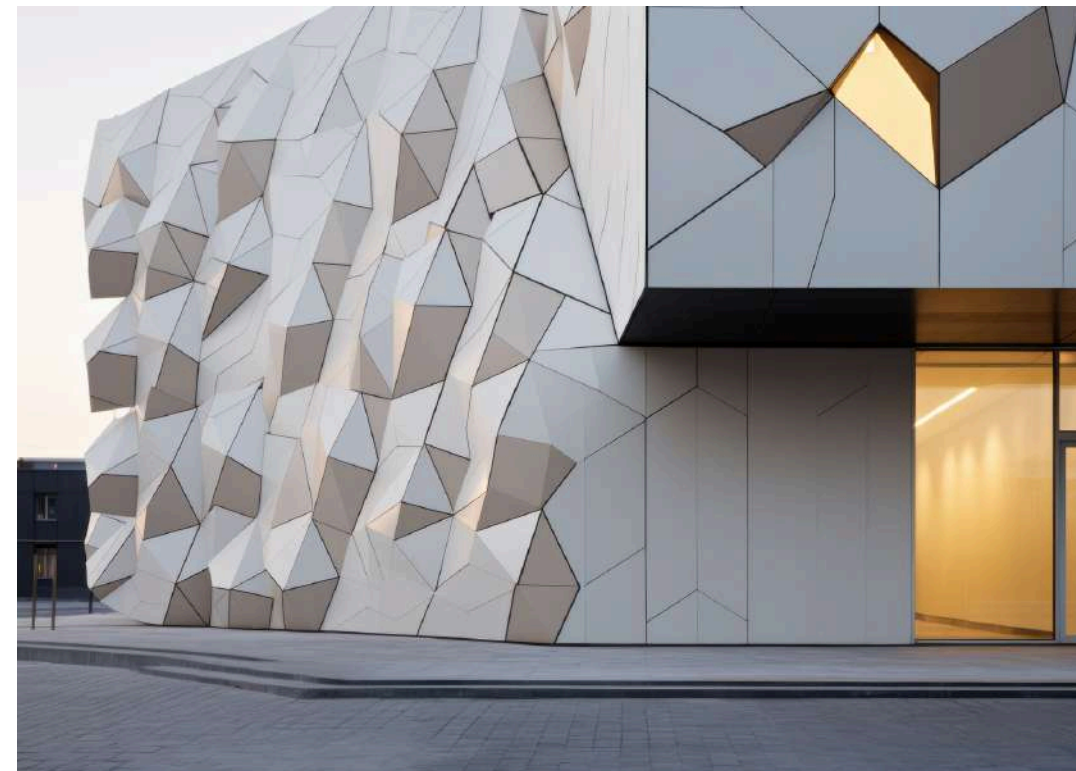
REQUEST FR A2, FR B1 TEST REPORT, CONTACT SALES DIRECTLY



ITEM	ALU. COMPOSITE PANEL	ALU. SOLID PANEL	ALU. CORRUGATED COMPOSITE PANEL
Material	0.5mm (Skin)	3.0mm	0.60mm/0.80mm
Thickness	4mm	3.0mm	4mm, 6mm
Weight	5.5 kg/m ²	8.1 kg/m ²	3.7/4.3 kg/m ²
Light Weight	Good	Normal	Excellent
Fire Proof	Normal	Good	Good

SPECIFICATION

Width:	1220mm, 1250mm, 1500mm
Length:	As per order, recommend 2440mm
Panel thickness:	Recommend 4mm, 6mm
Aluminum thickness:	0.50/0.30/0.50mm
Coating:	Polyester (PE) or PVDF
Core:	Aluminum corrugated core
Standard size:	1220x2440mm (4'x8')

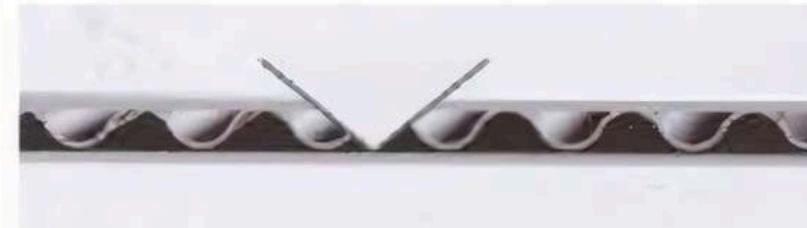


FR PROJECTS

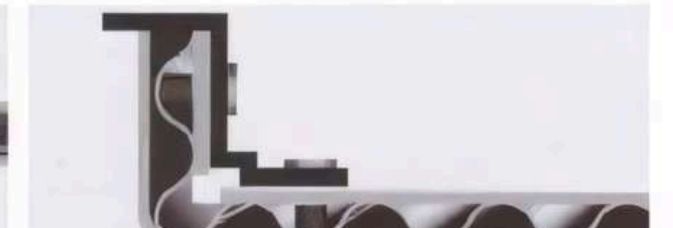
A2 FR ALUMINUM CORRUGATED COMPOSITE PANEL



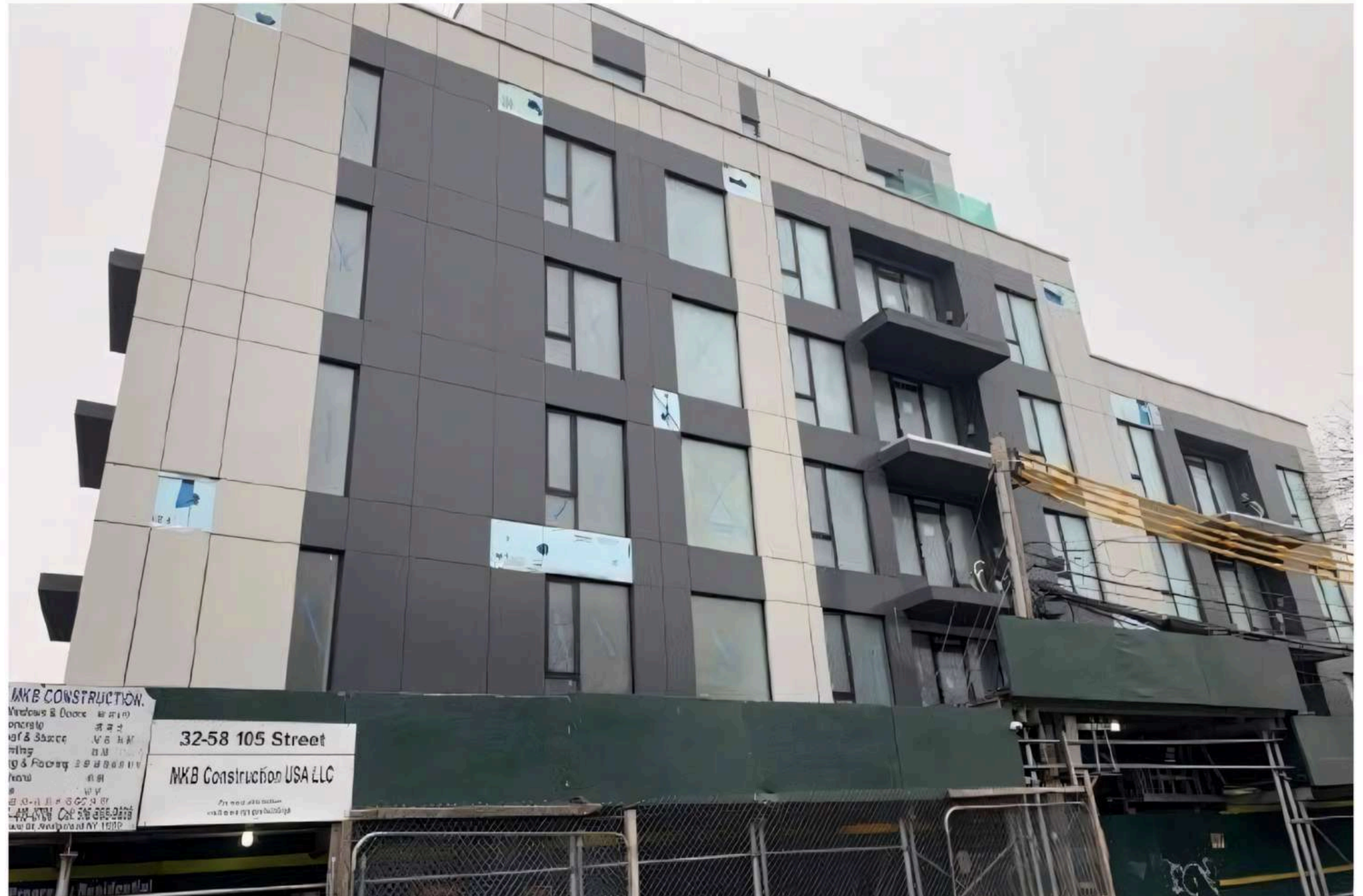
Cutting



Grooving



Shaping





ACP PVDF



ACP PVDF from Alusignpanel is a high quality aluminum composite panel, covered with PVDF coating, known for its exceptional resistance to weather conditions and durability, making it the ideal choice for exterior applications that require long lasting protection and a high level aesthetic.

Materials:

Aluminum Base Material: High-strength aluminum alloy sheet.

Core: Non-toxic Unbreakable Polyethylene (LDPE) plastic.

Surface: PVDF/PVDF Nano.

Technical Information

Width	1220mm, 1250mm, 1500mm
Length	Custom size, recommended 2440mm, 3050mm, 4050mm
Panel Thickness	3mm-6mm, recommended 4mm
Aluminum Skin Thickness	0.21mm~0.50mm, recommend 0.30mm and 0.40mm
Standard Size	1220mm x 2440mm (4' x 8'), 1500mm x 3050mm (5' x 10')
Colours	45 factory standard colours for reference
Others	Custom sizes and personalized colours also accepted

Applications:

- Building facades
- Construction cladding
- Roofing structures
- Signage

Advantages:

- Super weather resistance
- Easy maintenance
- Easy processing
- Light weight and colorful surface
- Non-toxicity and safety
- Excellent coating property



	4×0.30mm (ECO)	4×0.40mm	4×0.50mm (Standard)
--	----------------	----------	---------------------

Width (mm)	1220/1250/1500	1220/1250/1500	1220/1250/1500
Length (mm)	2000~5000	2000~5000	2000~5000
Weight (Kgs)	5.0	5.3	5.5
Alloy/Temper of the cover sheets	AA3003/H24	AA3003/H24	AA3003/H24
Surface Coating	PVDF/PVDF Nano	PVDF/PVDF Nano	PVDF/PVDF Nano
Core Materials	Non-toxic Unbreakable Polyethylene (LDPE) plastic	Non-toxic Unbreakable Polyethylene (LDPE) plastic	Non-toxic Unbreakable Polyethylene (LDPE) plastic
Colour	Solid, Metallic, Wood, Stone, RAL & Pantone	Solid, Metallic, Wood, Stone, RAL & Pantone	Solid, Metallic, Wood, Stone, RAL & Pantone



ACP PE

The **ACP PE (Polyester)** from Alusignpanel is an aluminum composite panel ideal for interior applications, facade decoration and signage. Composed of aluminum cover layers and a low-density polyethylene (LDPE) core, this panel offers an economical and durable solution for projects that require an excellent finish with an optimal quality-price ratio. The polyester coating guarantees a smooth surface that is easy to maintain.

Materials:

Aluminum Base Material: High-strength aluminum alloy sheet.

Core: Low-density polyethylene (LDPE), non-toxic.

Surface: Polyester coating.

Technical Information

Width	1220mm, 1250mm, 1500mm
Length	Custom size, recommended 2440mm, 3050mm, 4050mm
Panel Thickness	2mm-6mm, recommended 3mm
Aluminum Skin Thickness	0.10mm~0.50mm; recommended 0.15mm, 0.21mm, 0.30mm
Standard Size	1220mm x 2440mm (4' x 8'), 1500mm x 3050mm (5' x 10')
Colours	45 factory standard colours for reference
Others	Custom sizes and personalized colours also accepted

Applications:

- Interior Decoration
- Signage & Advertising
- Interior Signalling
- Facade Decoration
- Furniture

Advantages:

- Lightweight & Flexible
- Economical
- Aesthetic Finish
- Durability
- Non-toxic & Safe



ACP WOOD & STONE

The **ACP Wood & Stone** from Alusignpanel is designed to offer a finish that perfectly imitates natural wood or stone, being an ecological alternative to these traditional materials. In addition to its realistic appearance, the ACP is a much lighter and easier to install option, ideal for decorative projects that seek elegance without compromising environmental sustainability.

Materials:

Aluminum Base Material: High-strength aluminum alloy sheet.

Core: Low-density polyethylene (LDPE), non-toxic, or FR core

Surface: Wood and stone finish.

Technical Information

Width	1220mm, 1250mm, 1500mm
Length	Custom size, recommended 2440mm, 3050mm, 4050mm
Panel Thickness	2mm-6mm, recommended 3mm
Aluminum Skin Thickness	0.10mm~0.50mm; recommended 0.15mm, 0.21mm, 0.30mm
Standard Size	1220mm x 2440mm (4' x 8'), 1500mm x 3050mm (5' x 10')
Colours	Wood & Stone Finish
Others	Custom sizes and personalized colours also accepted

Applications:

- Interior Decoration
- Facade Cladding
- Furniture

Advantages:

- Realistic Wood & Stone Appearance
- Ecological Alternative to Natural Materials
- Lightweight & Easy to Install
- Excellent Durability
- Non-toxic & Safe



ACP MIRROR



The **ACP Mirror** from Alusignpanel features a polyethylene core between two aluminum cover layers, with a mirror-type front finish that provides a brilliant and sophisticated look. Available in three main options - Silver Mirror, Gold Mirror, and Black Mirror - this panel is ideal for projects that seek an eye-catching design with high visual impact.

Materials:

Aluminum Base Material: High-strength aluminum alloy sheet.

Core: Low-density polyethylene (LDPE), non-toxic, or FR core.

Surface: Mirror finish.

Technical Information

Width	1220mm
Length	Custom size, recommended 2440mm, 3050mm, 4050mm
Panel Thickness	2mm-6mm, recommended 3mm and 4mm
Aluminum Skin Thickness	0.15mm, 0.21mm, 0.30mm
Standard Size	1220mm x 2440mm (4'x 8')
Colours	Silver Mirror, Golden Mirror, and Black Mirror
Others	Custom sizes and personalized colours also accepted

Applications:

- Decorative Cladding
- Modern Facades Signage
- Interior Decoration

Advantages:

- Brilliant & Sophisticated Mirror Finish
- Available in Silver, Gold & Black
- Lightweight & Easy to Install
- High Durability
- Non-toxic & Safe



ACP BRUSHED



The **ACP Brushed** from Alusignpanel combines a polyethylene core between two aluminum cover layers, with a brushed front finish that provides an elegant and modern look. Available in four main variants - Silver Brushed, Gold Brushed, Blue Brushed, and Red Brushed - this panel is ideal for projects that seek sophistication and durability in their design.

Materials:

Aluminum Base Material: High-strength aluminum alloy sheet.

Core: Low-density polyethylene (LDPE), non-toxic, or FR core.

Surface: Brushed finish.

Technical Information

Width	1220mm, 1250mm, 1500mm
Length	Custom size, recommended 2440mm, 3050mm, 4050mm
Panel Thickness	2mm-6mm, recommended 3mm and 4mm
Aluminum Skin Thickness	0.10mm~0.50mm; recommended 0.21mm, 0.30mm
Standard Size	1220mm x 2440mm (4'x 8'), 1500mm x 3050mm (5'x 10')
Colours	Silver, Gold, Blue and Red
Others	Custom sizes and personalized colours also accepted

Applications:

- Modern Facades
- Interior Decoration
- Signage
- Decorative Cladding

Advantages:

- Elegant & Modern Brushed Finish
- Lightweight & Easy to Install
- Non-toxic & Safe
- High Wear Resistance
- Excellent Durability

ALUMINUM COMPOSITE PANELS COMPRISING TWO ALUMINUM COIL COVER LAYERS AND A POLYETHYLENE CORE

TECHNICAL DATASHEET – ALUSIGNPANEL® STANDARD

1. CHARACTERISTICS

- Light weight & High rigidity
- Very high resistance to weathering and corrosion
- UV-resistant & Weather resistant
- - applicable with temperatures between -40°C up to +80°C
- Easy to handle - also three-dimensional
- Wide range of colours and formats
- For interior and exterior applications
- Sustainable material - 100% recyclable

THICKNESSES AND WEIGHT

Panel Thickness	MM	2	3	3	4	4
Aluminum Thickness	MM	0.20	0.20	0.30	0.30	0.50
Weight	Kg/m ²	2.7	3.5	4.0	5.0	5.5

TECHNOLOGICAL VALUES

Section Modulus W	cm ³ /m	0.42	0.76	0.8	1.1	1.75
Rigidity E·I	kN·cm ² /m	320	810	865	1620	2400
Tensile Strength Of The aluminum Cover Sheets Rm	Mpa	≥95 (1100Alu)	≥95 (1100Alu)	≥140 (3003Alu)	≥140 (3003Alu)	≥140 (3003Alu)
Yield Strength Rp0.2	Mpa	110 – 175				
Elongation A50	%	≥ 3				

CORE

LDPE (Polyethylene Plastic)	g/cm ³	1
-----------------------------	-------------------	---

2. APPLICATIONS

- Architecture & construction
- Urban street furniture
- Equipment, appliances & machine construction
- Automotive
- Boat and shipbuilding
- Caravan construction
- Shopfitting | Trade show stands | Stage design
- Studio and office furnishings and fittings
- Interior design
- Medical technology & health care sector
- Advertising structures | hoardings
- Lighting industry

SURFACE

Lacquering		PVDF or polyester (PE) coating
Paint Thickness	Micron	PE paint : ≥ 16 MICRON PVDF Paint : ≥ 26 MICRON (2 layer paint) PVDF Paint : ≥ 35 MICRON (3 layer paint)
Gloss (Initial Value)	Gu	Matte 10~30 Glossy 80~95 (mirror ≥ 90)
Coating Adhesion		≥ 1 GRADE FOR 10*10MM 2 GRIDDING TEST
Hardness (Pencil Hardness)		HB – F

ACOUSTICAL PROPERTIES

Sound Absorption factor α_s		0.05				
Sound Transmission Loss R_w	dB	20	22	24	25	28
Loss factor d		0.0040	0.0043	0.0057	0.0072	0.0086

3. PROCESSING

- Printing - direct digital printing
- Printing - screen printing
- Lamination
- Cutting | Waterjet Cutting out
- Contour milling
- Punching
- Engraving
- Folding (V-groove) | Cold bending
- Cold rolling | Roll bending
- Gluing
- Screwing | Drilling | Riveting

THERMAL PROPERTIES

Linear Thermal Expansion		2.4~2.8mm/m at a temperature difference of 100°				
Thermal Resistance R	m ² K/W	0.0040	0.0056	0.0080	0.0113	0.0210
Thermal Transmission Coefficient U	W/m ² K	5.83	5.77	5.61	5.50	5.00
Peel strength (180° peel strength)	N/mm	≥ 5.0	≥ 5.0	≥ 5.8	≥ 5.8	≥ 8.2
IMPACT RESISTANCE		≥ 20KGS CMNO DEPAINTING.NO CRACK				
BOILING WATER RESISTANCE		2 HRS WITHOUT CHANGE				
SOLVENT RESISTANCE		100 TIMES WITH DIMETHLBENZENE WITHOUT CHANGE				
ACID RESISTANCE		IMMERSED SURFACE IN 2% NaOH FOR 24 HRS WITHOUT CHANGE				
OIL RESISTANCE		IMMERSED SURFACE IN 20# ENGINE OIL FOR 24HRS WITHOUT CHANGE				
Range of Thermal Application	°C	-40 up to +80				

NOTE : These technical data of our products are typical ones for standard ALUSIGNPANEL®. The actually measured values are subject to production variations.

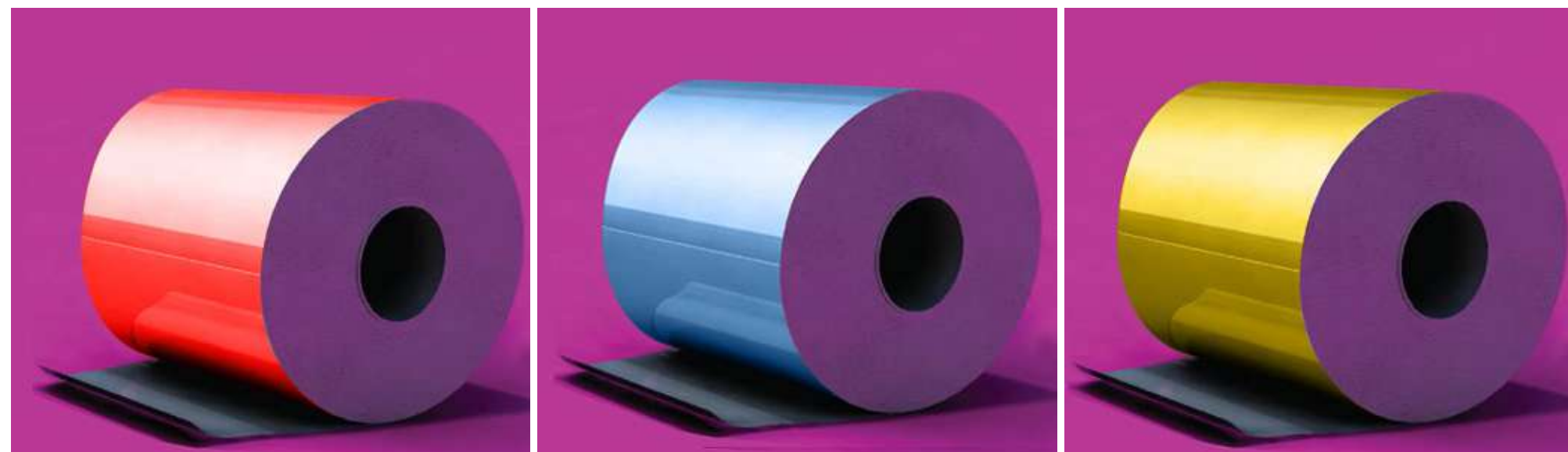
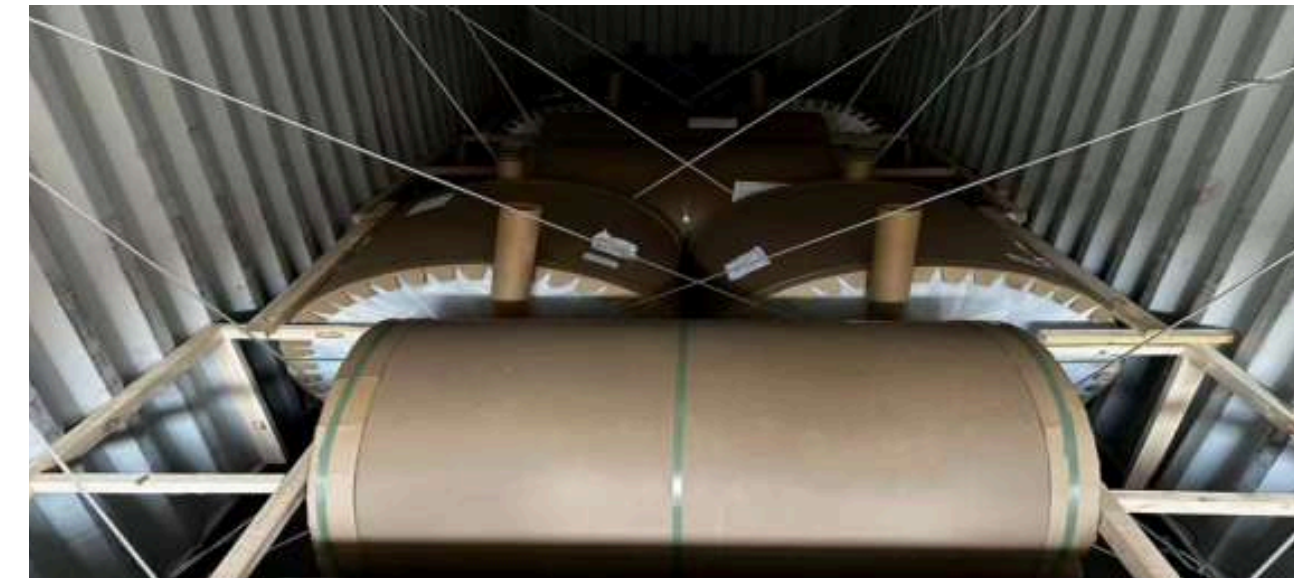
COLOR COATED ALUMINUM COILS



Raw Material: AA1100, AA3003

Paint: PE, HDPE, PVDF

Thickness:	0.06mm~0.50mm
Width:	1240mm, 1270mm, 1520mm, 1570mm
Color:	Standard chart or custom
Max Diameter:	1200mm
Weight:	2.50~3.00 Ton/Coil
Interior Diameter:	505mm or 405mm



COLOR CHART

METALLIC & SOLID COLORS



WWW.ALUSIGNPANEL.COM

Colors for reference only

METALLIC & SOLID COLORS



ANTI-SCRATCH COLORS



WWW.ALUSIGNPANEL.COM

Colors for reference only

GLOSSY COLORS



MIRROR & BRUSHED & TIMBER & STONE & PEARL COLORS



WWW.ALUSIGNPANEL.COM

Colors for reference only

PACKING & LOADING

According to different needs, mainly three ways:



BULK PACKING



WOOD PALLETS PACKING



WOOD CASES PACKING

FAQ

Q: What is your MOQ per color?

A: PE ACP - 800m², PVDF ACP - 1000m², Special colors - 1200m²

Q: Can we do a custom color? How about OEM logo?

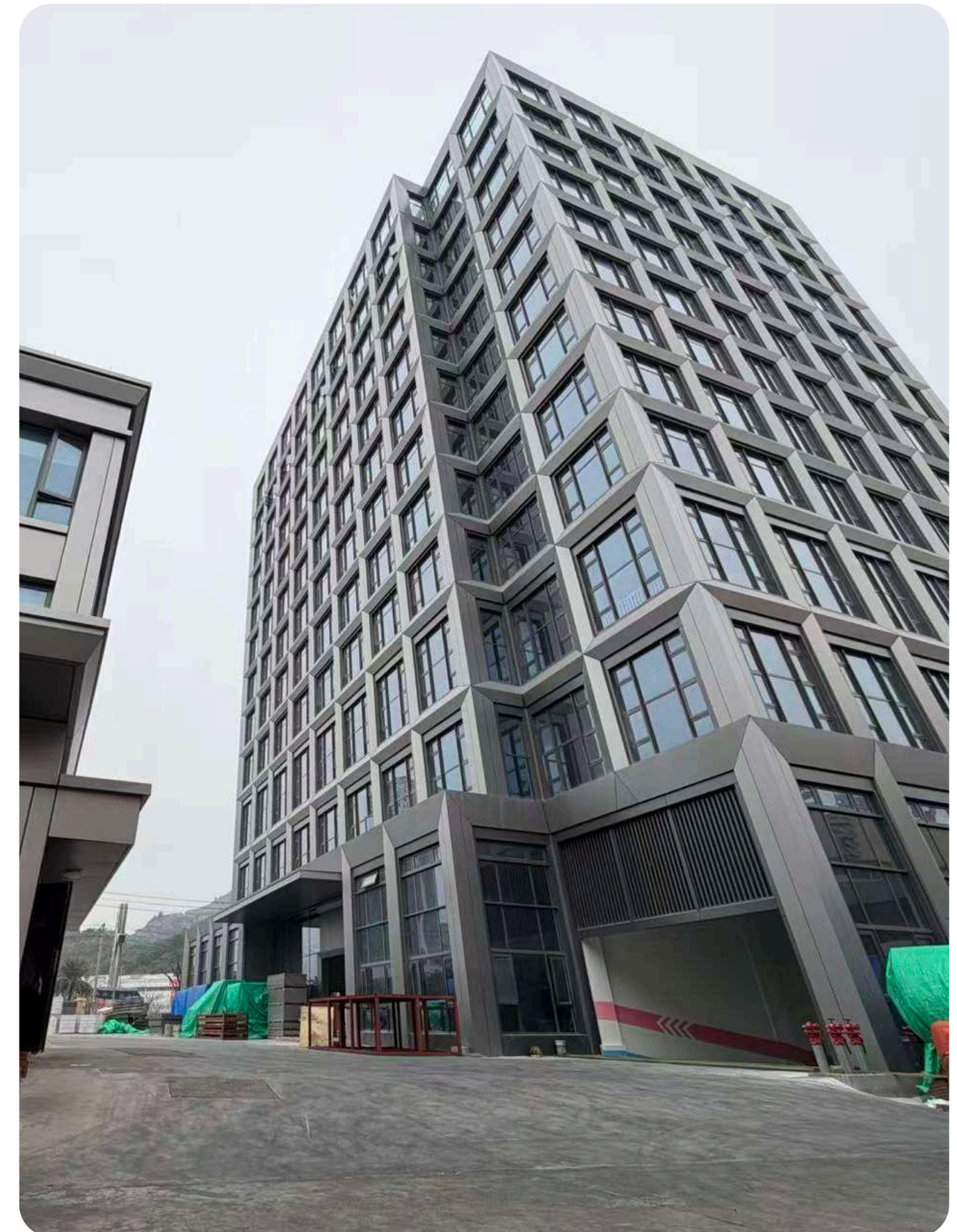
A: Custom colors by sample or RAL & Pantone code available. OEM logo: extra US\$800 first-time moulding charge, refunded on 10th container.

Q: How about the product guarantee period?

A: PE coating: 3~5 years outdoor / 10 years indoor. PVDF coating: 15 years outdoor.

Q: How about the payment term and lead time?

A: 30% TT advance + 70% balance TT before shipment. Lead time: 15 working days after deposit received.

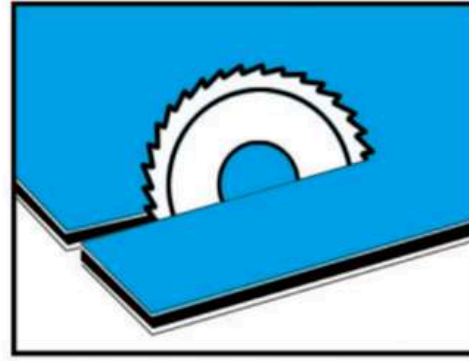


PROCESSING



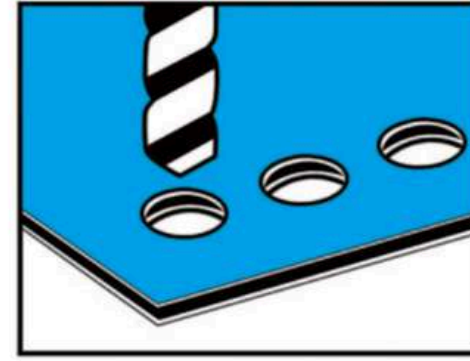
Gluing

Use standard metal and aluminium adhesives. Ensure you avoid contact with the polyethylene centre some adhesives will attack and decay the core. the use of conventional double faced tapes is acceptable.



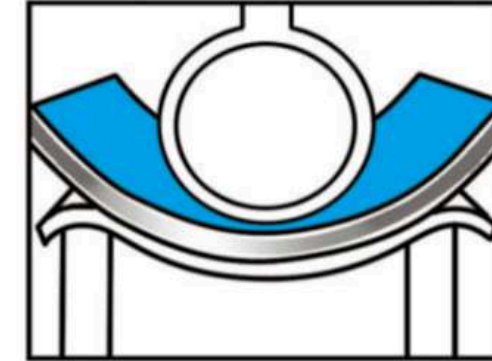
Sawing

Circular Saw; trapezoidal/ flat tooth blade Flat teeth chamfered at 45° carbide tipped.



Drilling

ALUSIGNPANEL is easily drilled-we suggest for best results, the use of bits designed for drilling aluminium and plastic are used.



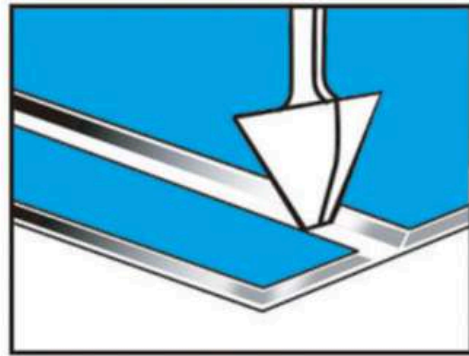
Bending

Use a folding table.
Min inside radius $r = 15xt$ (t =panel thickness).



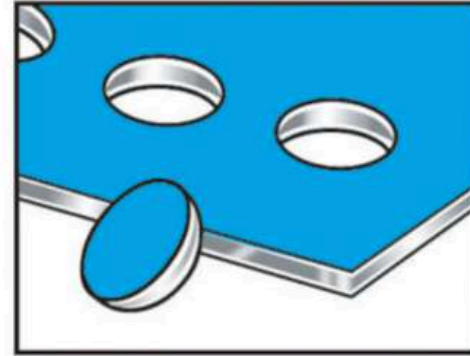
Digital printing

There have been numerous inks tested for compatibility and adherence to ALUSIGNPANEL. The company has the large-scale digital printing machine for the customers.



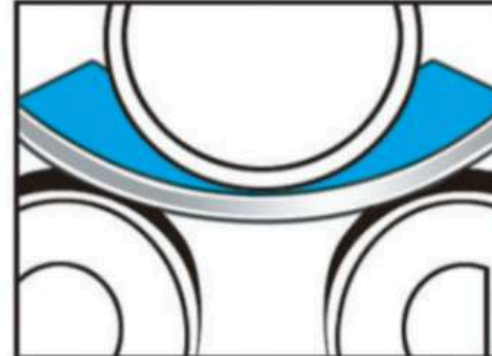
Slotting

Grooves can also be easily cut using a special cutting machine that comes complete with a guide. The V shaped groove is automatically cut into ALUSIGNPANEL which can then be easily formed by hand. A minimum thickness of 0,3mm of the polyethylene must be left on the bottom of back of the decorative face.



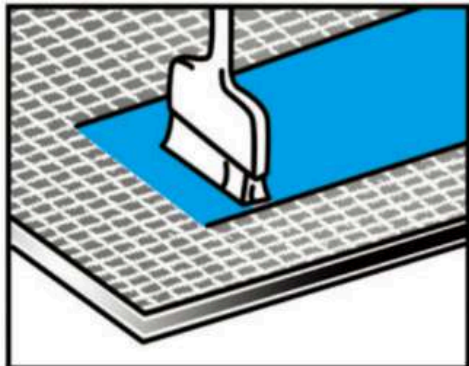
Punching

Use a steel band tool on a punching base for 2mm and 3mm thickness. Conventional punching machines are excellent for this process.



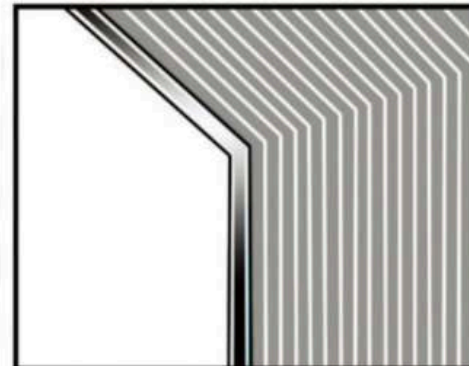
Roll bending

3-roller panel bender is preferable for bending large internal diameters.



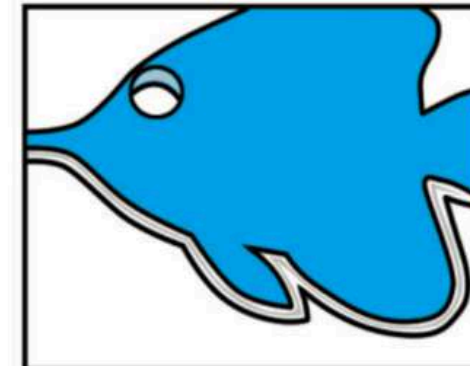
Silk-screen

There have been numerous inks tested for compatibility and adherence to ALUSIGNPANEL.



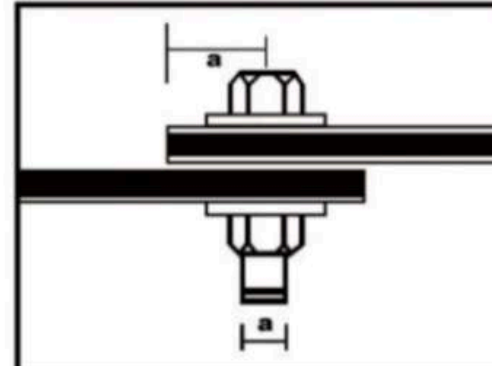
Folding

ALUSIGNPANEL Can easily be folded by slotting or routing a groove on the rear of the product, as describes in the slotting and routing section.



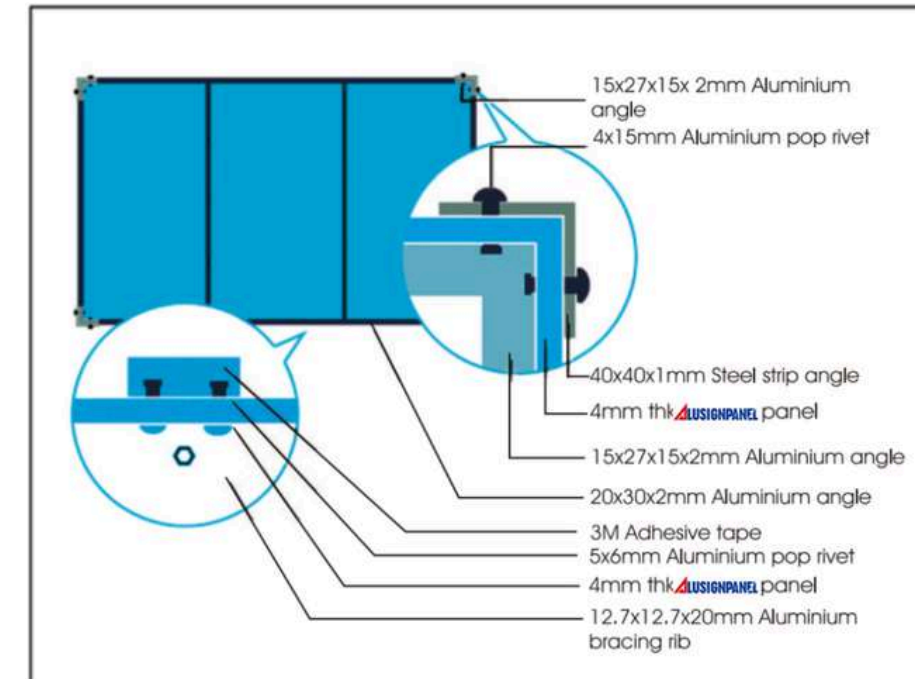
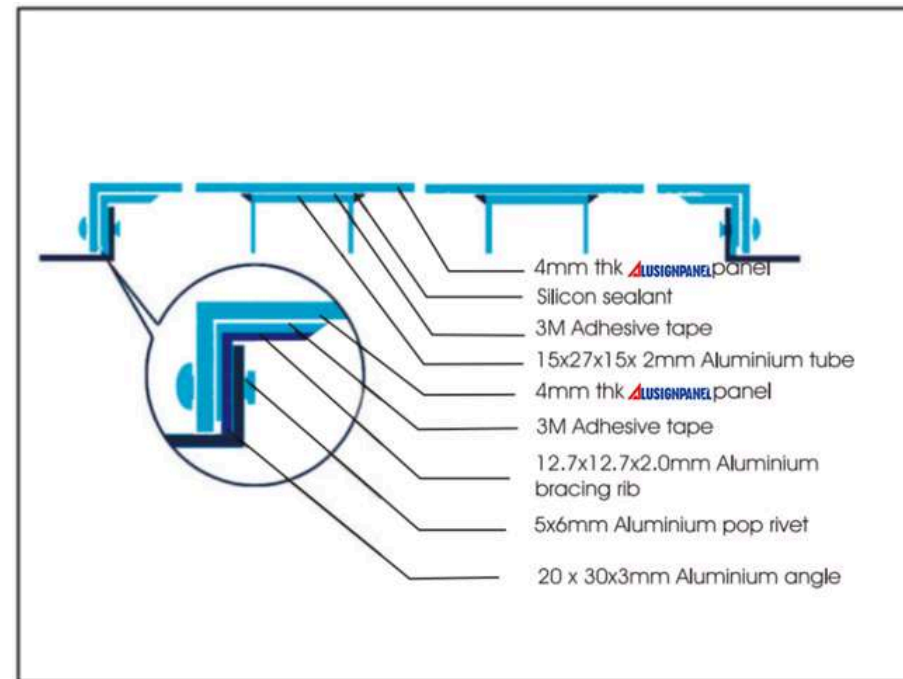
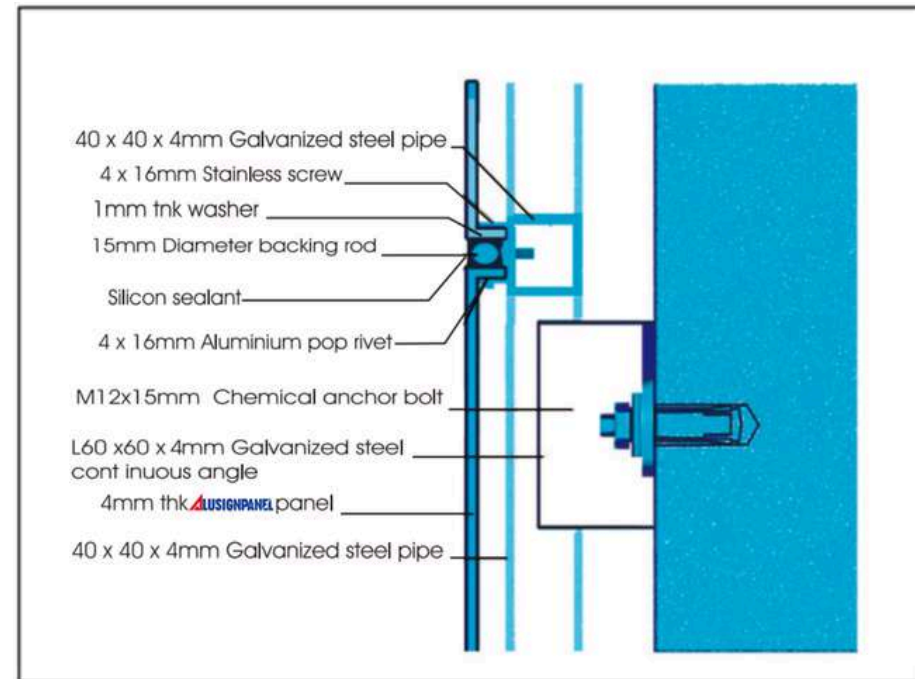
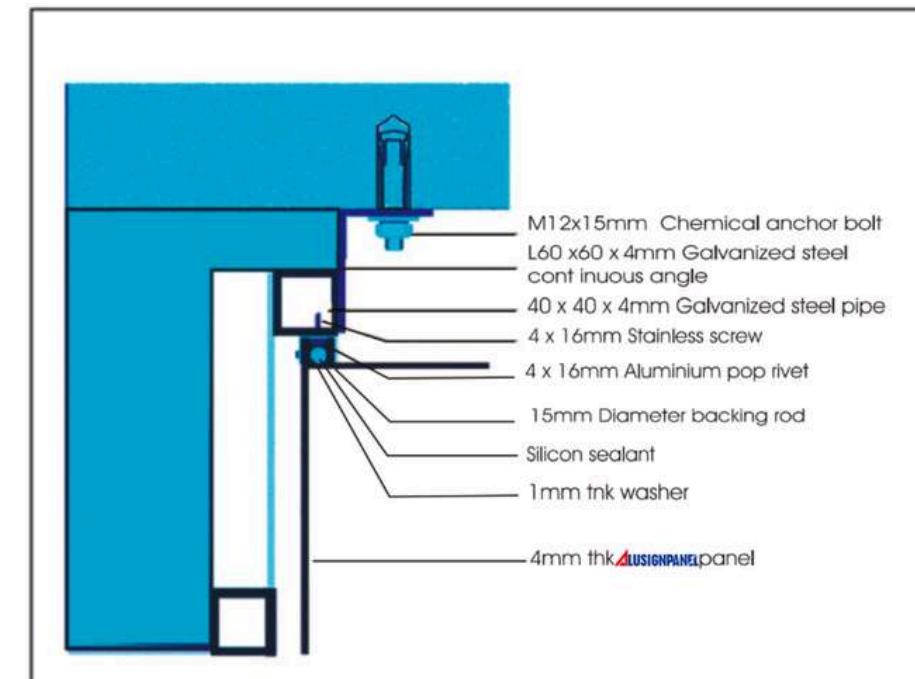
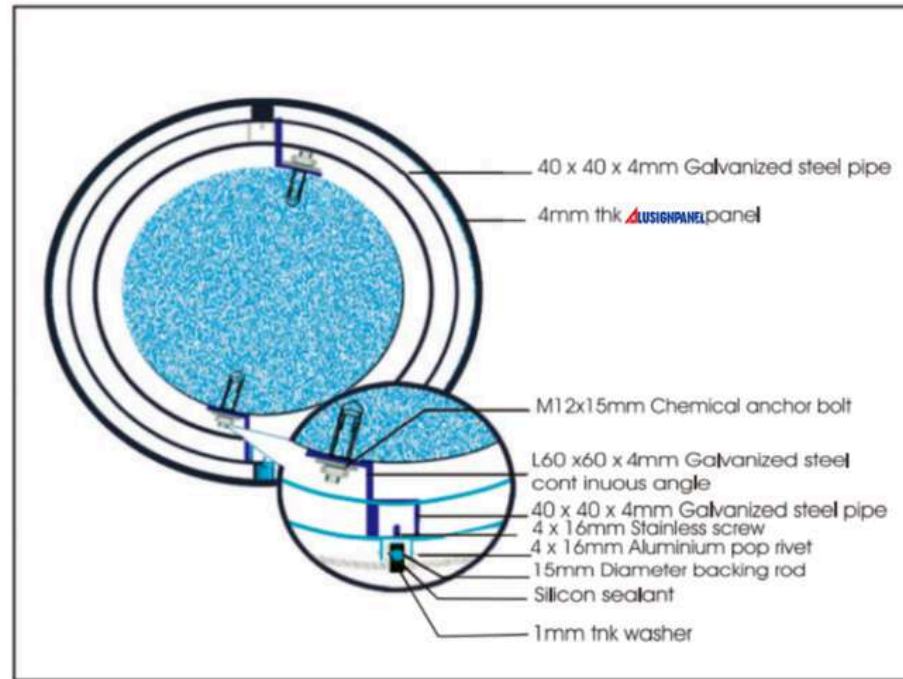
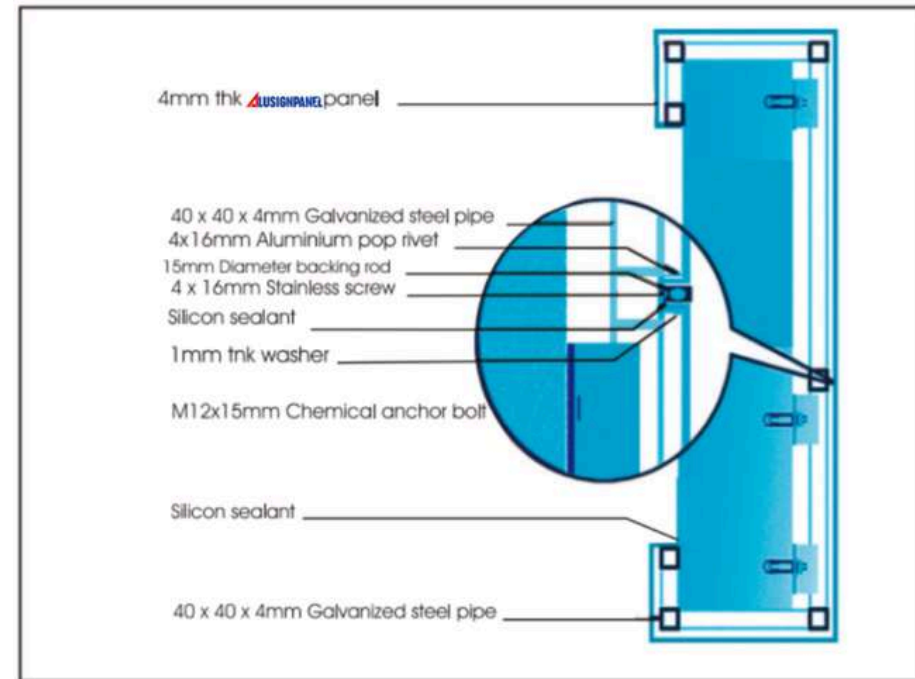
Contour cutting

ALUSIGNPANEL can laminated manually or by machine using cast or calendared self adhesive foil. The quality of polyester finish ensures it does not come off if the foil is changed. photographs can be applied with adhesive film or wet dispersion adhesive. panel must be clean and free from grease.



Clamping and bolting

Can be clamped with a serrated corner joint and bolt sections for ALUSIGNPANEL thickness of 3mm and 4mm. When bolting, $e=2D$ is the formula to use to calculate the distance of fixing to the end of the panel





ALUSIGNPANEL'S OFFICE BUILDING

Location: Wenzhou City

Color: Grey Metallic 4mm 0.50mm ACP FR & PVDF

Total:

10,000+

Square meters



CELLSHOP SHOPPING MALL

Location: Ciudad del este - Paraguay

Color: Silver Grey, 4mm 0.50mm ACP FR & PVDF

Total:

10,443

Square meters

COMMERCIAL AND RESIDENTIAL BUILDING

Location: Bangkok - Thailand

Color: Silver Grey, Flash Gold, 4mm ACP PVDF

Total:

7,462

Square meters

Multifamily Residential Complex

Location: Bangkok - Thailand

Colors: RAL090 85 05 white , RAL090 80 10 Beige , RAL100 60 10 Oliver , 2020-15 Wood colors , 4mm ACP FR & PVDF

Total:

9,223

Square meters



MAIN PROJECTS

COMMERCIAL AND RESIDENTIAL BUILDING

Location: Fortaleza - Brasil

Color: SJ8011, Pure White, 4mm 0.50mm ACP FR & PVDF

Total:

3,000+

Square meters



BYD 4S STORE

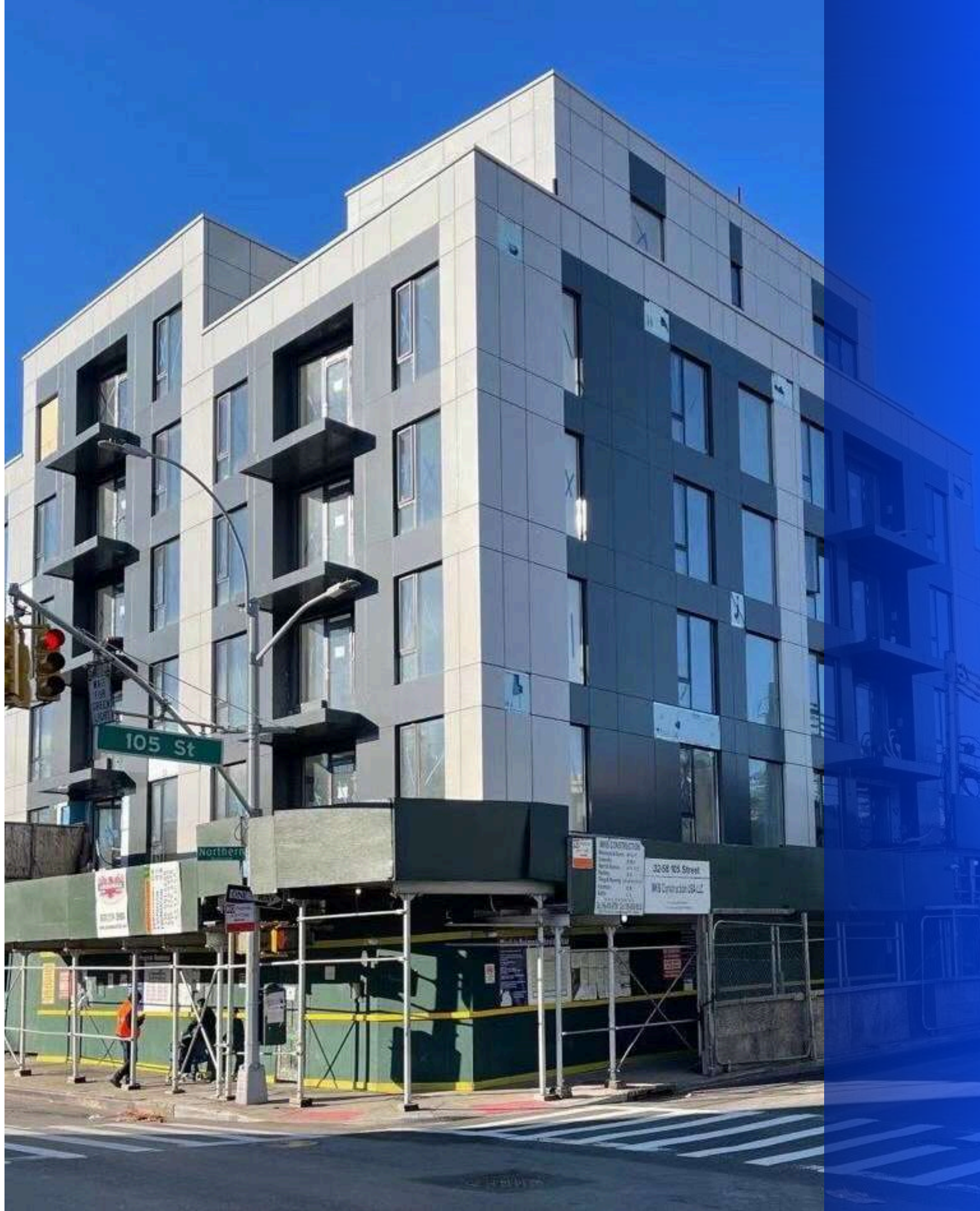
Location: Vietnam

Color: SJ8049 Black , 4mm 0.50mm ACP PVDF

Total:

1,200

Square meters



NEW YORK PROJECT

Location: New York

Color: White , Silver 6mm 0.50mm ACP FR PVDF

Total:

2,700

Square meters



NEW YORK PROJECT

Location: New York

Color: Jade Metallic , Black 5mm 0.70mm ACCP FR
PVDF

Total:

1,800

Square meters

VIRGINIA BEACH HOUSING RESOURCE CENTER

Location: 104 N. Witchduck Road,
Virginia Beach, Virginia, USA

Color: Silver Grey (PVDF Coating, FR ACP)

Total:

5,900

Square meters



COUNTRY INN & SUITES

Location: 2176 East 23rd Street,
Lawrence, Kansas, USA

Color: Custom - Dark Bronze & City
Grey (PVDF, FR ACP)

Total:

3,900

Square meters

JUBILEE SPRAY PARK

Location: 510 Grove Dr W, Spruce Grove, AB, Canada

Color: Silver Mirror (Mirror finish, FR ACP)

Total:

3,000

Square meters

SICHUAN LUZHOU PEOPLE'S GOV. SERVICE CENTER

Location: Jiangyang West Road, Luzhou city, Sichuan, China

Color: Light Grey & Deep Rose (PVDF, FR ACP)

Total:

7,800

Square meters

CHENGDU DUJIANGYAN STADIUM

Location: Yingbin Road, Dujiangyan, Chengdu, Sichuan, China

Color: Silver Grey & Custom Red (PVDF, FR ACP)

Total:

8,600

Square meters

ALUSIGNPANEL[®]

ALUMINUM COMPOSITE PANELS



WEBSITE



INSTAGRAM



FACEBOOK